

Carbonators and Water Boosters



Apex offers a full line of high quality carbonators, water boosters, parts and accessories for beverage dispensing systems.



DISPENSING *Refreshing* RESULTS



CARBONATORS & WATER BOOSTERS

CARBONATORS

McCann's Carbonators are the industry standard, and have a time-tested, reliable design. These carbonators feature a two-piece design with an encapsulated electronics package. This design allows for service without the need for shutting off CO2 or water which reduces service time and lowers costs. McCann's carbonators feature Diamond Brite stainless steel construction that resists corrosion and are NSF and UL certified for lead compliance. McCann's offers a 5 Year Warranty on the carbonator tank and the liquid level probe control.

Part Number	Description	Electrical	Motor	Tank Capacity	Water Capacity	Soda Outlets	Dimensions (WxDxH)
E400397	McCann's "Big Mac" Carbonator	115V/60Hz/1ph	1/3 hp	180 oz	100 gph	2	14" x 13" x 10.5"
43-6002	McCann's Small Carbonator	115V/60Hz/1ph	1/3 hp	32 oz	100 gph	1	9" x 11.5" x 11"



[E400397](#)



[43-6002](#)



[85-1923-00](#)

Lancer's Turbo Carbonators feature a built-in advanced diagnostics system, Anderson Brass vented check valve, heavy duty high capacity tank, solid state electronics, high capacity for fast flow valves, ASSE approved check valve, and stainless steel backflow preventor.

Part Number	Description	Electrical	Motor	Tank Capacity	Water Capacity	Soda Outlets	Dimensions (WxDxH)
85-1923-00	Turbo Fast Flow Carbonator	115V/60Hz	1/3 hp	215 oz	100 gph	2	12.25" x 14.25" x 12.5"

Carbonator and Water Booster Shelves

Part Number	Description	Dimensions (WxDxH)
16-1459	Carbonator/Water Booster Floor Stand with Legs	14.25" x 9.5" x 6"
16-1480	Carbonator/Water Booster Stand, Wall Mount	14.63" x 13.13" x 10.25"
16-1591	Quick Mount Carbonator Shelf for 28"W Flex Rack	16.24" x 13.92" x 9"



[16-1459](#)



[16-1480](#)

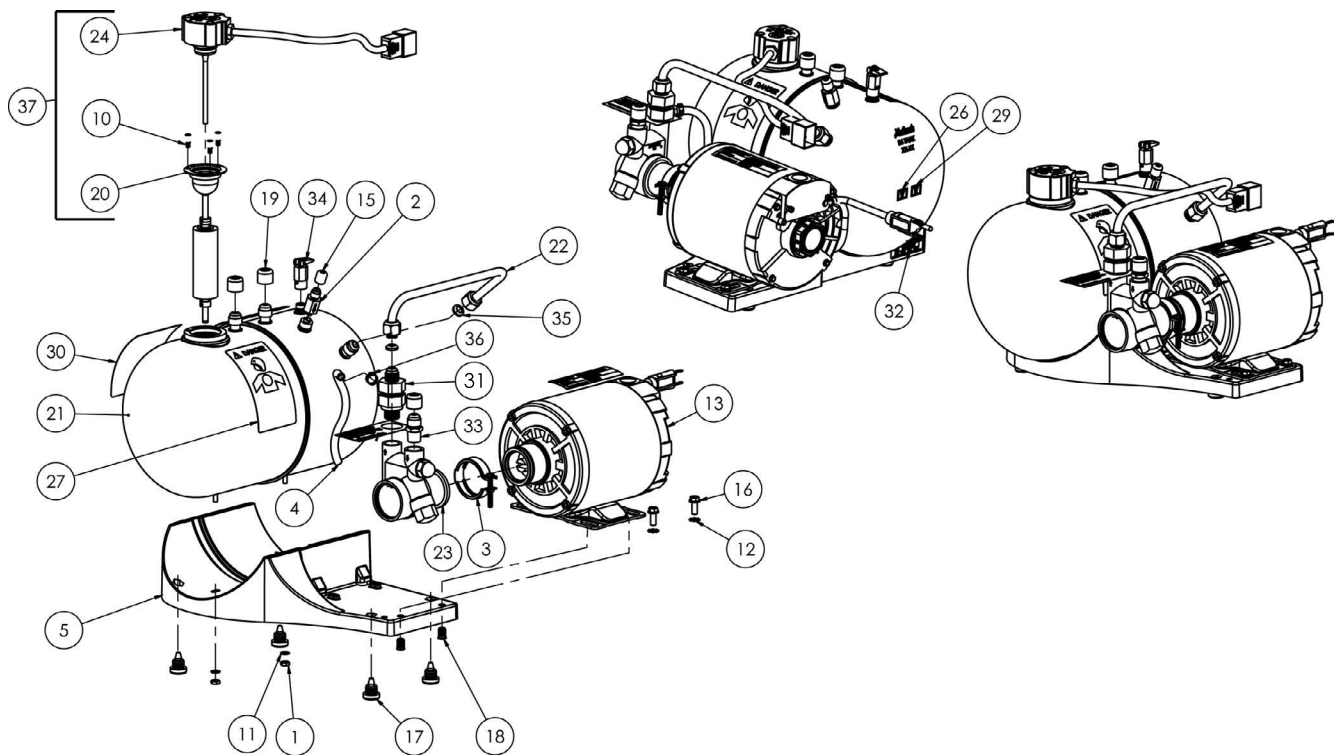


[16-1591](#)



CARBONATORS & WATER BOOSTERS

E SERIES CARBONATOR



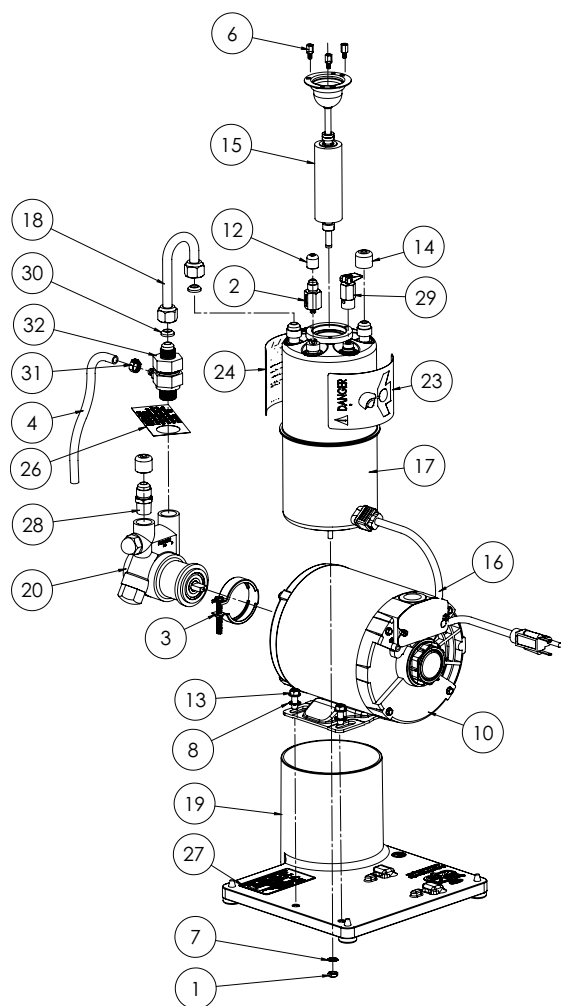
Item	Part Number	Description
1	00-0424	Nut, Hex, 10-32, Zinc Plated
2	00-0868	Check Valve, Carbonator, Single, 1/4" Male Flare
3	00-1222	Clamp, V-Band, Carbonator
4	01-1649	Tubing, PVC, 1/4" ID x 3/8" OD, Clear, Cut 12"
5	01-1893	Carbonator Base
10	09-1877	Stud, Probe
11	10-0251	Washer, Lock, #10, Ext. Tooth
12	10-0297	Washer, Lock, # 1/4, External Tooth, Zinc Plated
13	10-1649	Motor, 115V, 1/3 HP
15	A300A11A	Plug, Cap, VC-375-8, Black
16	10-1938	1/4-20 x 5/8", Screw, Hex Head, Phillips
17	10-2000	Foot, Rubber
18	10-2002	1/4-20 x .50, Flanged, Expansion Insert
19	VC-500-8	Cap Plug, VC-500-8, Black, Vinyl
20	15-1951	Assy., 115/220V, Probe, Float Ring

Item	Part Number	Description
21	15-3095	Assy., Tank, McCann's Carbonator
22	15-3100	Assy., Carbonator, Water Inlet & Nut, Plastic Base
23	PB0351T NANN4940	Fluid-O-Tech Pump, Brass
24	16-2115	Assy., Probe, 115V Electrical, Black Cap
27	18-1339	Decal, Carbonator Tank, Warning, CO2
30	18-1503	Label, Carbonator, Large
31	19-0897	Assy. 1022, Backlow Preventer
32	18-1605	Label, Model, Serial Number, E400397
33	48-66	Fitting, 3/8" Male Flare x 3/8" Male Pipe Thread, Brass
34	19-0031	Valve Assy., Pressure Relief, Carbonator Tank, 180 PSI, Red Handle
35	NY45-6	Gasket, Flare, 3/8", SAE
36	118-105	Clamp Stepless SS
37	16-1404	Complete Probe Assembly



CARBONATORS & WATER BOOSTERS

43-6002 CARBONATOR

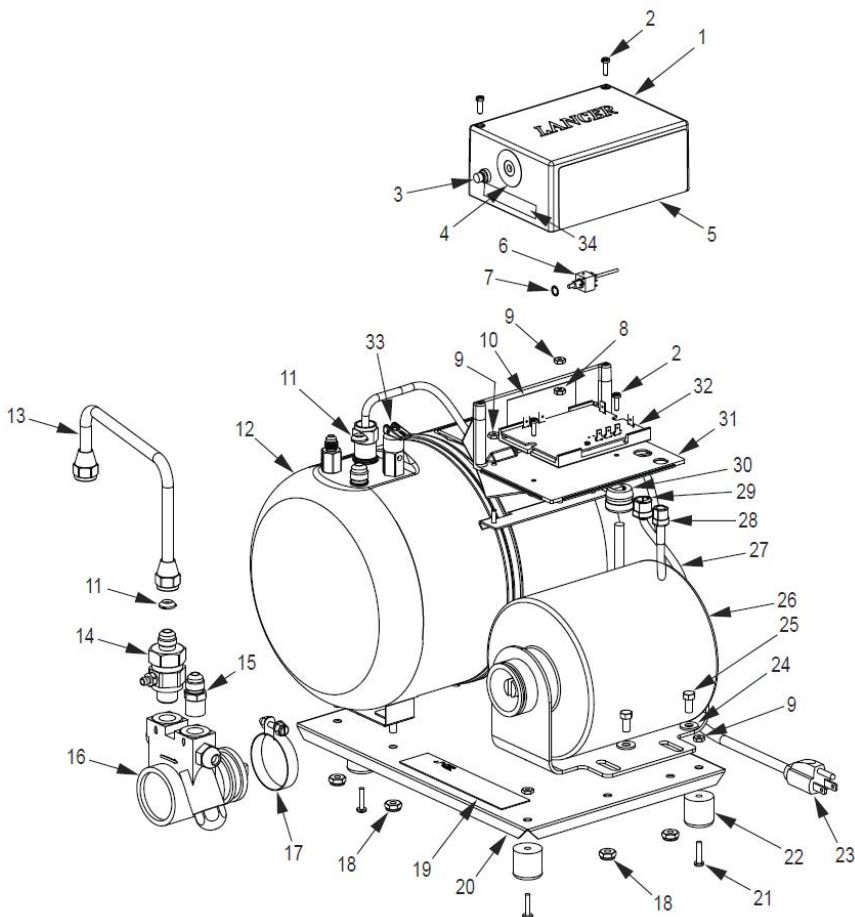


Item	Part Number	Description
1	00-0424	Nut, Hex, 10-32, Zinc Plated
2	00-0868	Check Valve, Carbonator, Single, 1/4" Male Flare
3	00-1222	Clamp, V-Band, Carbonator
4	01-1649	Hose, PVC, 1/4" I.D. x 3/8" O.D., Cut 12"
6	09-1877	Stud, Probe
7	10-0251	Washer, Lock, #10, External Tooth
8	10-0297	Washer, Lock, # 1/4, External Tooth, Zinc Plated
10	10-1649	Motor, 115V, 1/3 HP
12	A300A11A	Plug, Cap, VC-375-8, Black
13	10-1938	1/4-20 x 5/8", Screw, Hex Head, Philips
14	VC-500-8	Cap Plug, VC-500-8, Black, Vinyl
15	15-1951	Assy., 115/220V, Probe, Float Ring
16	15-2088	Assy., Carb., Power Cords, 18-3/8 ft.
17	15-3092	Assy., Carb., Weld, Top & Bottom, Small Tank, 3/8" MF w/ Stud
18	15-3093	Assy., Tubing, Water Inlet for 43-5002
19	15-3153	Assy., Carbonator Base w/ Insert & Feet
20	PB0351T NANN4940	Fluid-O-Tech Pump, Brass
21	16-2115	Assy., Probe, 115V Electrical, Black Cap
25	18-1345	Decal, Small Carbonator
26	18-1368	Decal, Test Sticker
28	48-66	Fitting, 3/8" Male Flare x 3/8" Male Pipe Thread, Brass
29	19-0031	Valve Assy., Pressure Relief, Carb. Tank, 180 PSI, Red Handle
30	NY45-6	Gasket, Flare, 3/8", SAE
31	118-105	Clamp Stepless SS
32	19-0897	Assy. 1022, Backflow Preventer



CARBONATORS & WATER BOOSTERS

85-1923-00 CARBONATOR



Item	Part Number	Description
1	05-0528-01	Cover, Carb LLC
2	04-0470	Screw, 6-19X0.500, PHD
3	12-0241	Boot, U-1403-APEM
4	06-1289	Label, Test Switch, Carb
5	06-3400	Label, Test/Reset Switch
6	06-1236/01	Label, Troubleshoot
7	04-0836/01	Washer, Lock, Internal Tooth
8	04-0049	Nut, Hex, 8-32, SS
9	04-0297	Nut, Hex, 8-32, KEPS, SS
10	06-0266/02	Label, Wiring Diagram
11	05-0017	Washer, Seal, Flare, Nylon, 3/8
12	87-0026	Tank Assy, Carb, 3/8, Flare
13	48-2386	Tubing Assy, Water, 3/8
14	17-0611	Check Valve, Vented, BR, ABCO
15	17-0611-01	Check Valve, SS
16	17-0611-02	Check Valve, Vented, BR, ABCO, Low Lead (100 V only)
17	01-0111	Adapter, BR, 3/8 x 3/8
18	PB0301T NANM7740	Pump Assy, Water, Replaceable
19	07-0017/01	Clamp with Screw, ZP
20	04-0032/01	Nut, Nylock, 1/4-20, SS
21	06-0075-01	Nameplate, Vinyl, PN/SN/ ELEC
22	07-0199/01	Plate, Base Probe, Carb
23	04-1361	Screw, 8-32 x 0.75, PH, SS
24	04-0247	Isolator, 1/4-20 Single Stud
25	52-0588	Power Cord Assy
26	52-1739	Carb Switch Assy (100 V only)
27	52-1898	Cord Assy, Carb, 220V
28	04-0033/01	Washer, Flat, 4 x 0.065 x 0.281 ID
29	04-0520/01	Screw, 1/4-20 x 0.500, HHD, SS
30	91-0008	Motor, Carb, 1/3 HP, 115V/60A
31	91-0011/01	Motor, Carb, 1/3 HP, 220V/50Hz
32	91-0205	Motor, Carb, 1/3 HP 100-200 / 240V (100 V only)
33	52-0585	Cord Assy, Motor
34	13-0028	Relief, Strain, 7/8 DIA
35	13-0008	Bushing Relief, HEYCO, 1200
36	13-0026	Strain Relief, Small
37	05-0529-01	Enclosure, Carb, Control, Self
38	64-5000	PCB Assy
39	64-2962	PCB Assy, 220V
40	64-2962-01	PCB Assy, 220V w/Reset
41	64-5076-01	PCB Assy, 220V w/Auto reset
42	64-5081-SP	PCB Assy, 115V, Triac Drive, w/ Auto reset (100 V only)
43	54-0066	Relief Valve Assy, Plastic
44	06-2590	Label, "Reset Button"
45	52-0590/01-SP	Probe Assembly
46	52-0206-SP	Probe Assembly Universal



CARBONATORS & WATER BOOSTERS

FLUID-O-TECH / PROCON PUMPS

NSF approved rotary vane pumps are designed to pump potable water. Pump applications include soft drink beverage dispensers, espresso machines and beer systems. Pumps mount to a NEMA 92-80-04 (carbonator) motor using a v-band clamp.



Series 1 Pumps

Series 2 Pumps



Series 3 Pumps

Series 4 Pumps

Series 5 Pumps

Part Number	MFR	Series	Material	GPH	Set By-Pass PSI	Application and Notes
PA0401XNCNN0000	Fluid-O-Tech	1	Brass	140 GPH	175 PSI	Integrated Strainer
PB0351TNANN4940	Fluid-O-Tech	1	Low Lead Brass	125 GPH	250 PSI	Integrated Strainer
PB0301TNANM7740	Fluid-O-Tech	1	Low Lead Brass	100 GPH	250 PSI	Integrated Strainer
111A125F11AA250	Procon	1	Brass	125 GPH	250 PSI	Carbonator
111A100F11AA250	Procon	1	Brass	100 GPH	250 PSI	Carbonator
PA0101ANCNN0000	Fluid-O-Tech	2	Brass	50 GPH	175 PSI	No Strainer
PA0104ANNANN0000	Fluid-O-Tech	2	Brass	50 GPH	175 PSI	Balanced Relief Valve, No Strainer
PB0351ANCNN0000	Fluid-O-Tech	2	Brass	125 GPH	175 PSI	No Strainer
112A070F11AA100	Procon	2	Brass	70 GPH	100 PSI	
112A080F11AA170	Procon	2	Brass	80 GPH	170 PSI	
PA0301ANANN0000	Fluid-O-Tech	2	Brass	100 GPH	175 PSI	Cold Carbonator, No Strainer
112A125F11AA250	Procon	2	Brass	125 GPH	250 PSI	Cold Carbonator
112A100F11AA170	Procon	2	Brass	100 GPH	170 PSI	Cold Carbonator
102A080A11BA170	Procon	2	Brass	80 GPH	170 PSI	
113A050F31XX	Procon	3	Stainless Steel	50 GPH	N/A	No Relief Valve
113A100F31BA	Procon	3	Stainless Steel	100 GPH	170 PSI	
PA0100BH0NN0000	Fluid-O-Tech	3	Stainless Steel	50 GPH	175 PSI	Recirculation, No Relief Valve
PA0101BHCNN0000	Fluid-O-Tech	3	Stainless Steel	50 GPH	175 PSI	Recirculation With Relief Valve
PA0300BH0NN0000	Fluid-O-Tech	3	Stainless Steel	100 GPH	175 PSI	Recirculation, No Relief Valve
PA0301BHCNN0000	Fluid-O-Tech	3	Stainless Steel	100 GPH	175 PSI	Recirculation With Relief Valve

Rotary Vane Pump Parts and Accessories

Part Number	Description
1138	1300 Series Strainer
3212-51	O-Ring, Strainer
3146	Adjustment Screw Acorn Nut O-Ring
91-03-04	Cross Coupling Male/Female
92-80-04	Spacer, Coupling and V-Band Clamp Kit
1143	Key Pump Brass Coupling
22697	2-Piece Sytrofoam Drip Shell for Pump
16-0856	Pump Saver with Lamp, 125/250V
00-1222	Clamp, V-Band, Carbonator





CARBONATORS & WATER BOOSTERS

REPLACEMENT MOTORS

Carbonator replacement motors are built to last and interchangeable with OEM motors.

Part Number	Description
6079	1/3 HP, Resilient Base, Dual Volt, 1725/1425 RPM, Continuous Duty
4406	1/3 HP, Resilient Base, 115V, Continuous Duty
4805	1/3 HP, Resilient Base, Dual Volt, Continuous Duty
10-1647	1/3 HP, Resilient Base, 115V/60Hz, 1725 RPM, Continuous Duty
030000179	1/3 HP, Resilient Base, 115V/60Hz, 1725 RPM, Continuous Duty



[4805](#)

REPLACEMENT CARBONATOR PUMP

Carbonator pump with run-dry capability for small to medium carbonators.

Part Number	Description
8095-902-290	Shurflo Carbonator Pump, Non-Corded, 100 PSI Bypass, 1.5 GPM, 230V 50/60Hz, Open Flow, No Shutoff Switch, No Motor Baseplate



[8095-902-290](#)

ASSE 1022 BACKFLOW PREVENTERS

- ASSE 1022 compliant OEM carbonator
- Working pressures from 10-200 psig
- Working Temperature up to 130 OF
- 3/8" Flared x 3/8" NPT connections
- Atmospheric Port for Visual Indication of Primary Check leakage
- Field repairable

Part Number	Description
19-0897	Anderson Brass Check Valve
19-0980	ASSE 1022 Stainless Steel 3/8 MFL x 3/8 NPT
16-1585	Repair Kit for Anderson Brass Check Valve
16-1521	Conversion Kit for E3000 Series Carbonators Includes ASSE 1022 Check Valve



[16-1585](#)



[19-0897](#)



[19-0980](#)



[16-1521](#)

WATTS SD3 BACKFLOW PREVENTERS

Series SD3 is a dual check with atmospheric port designed for the protection of the water supply from carbon dioxide gas and carbonated water.

- Certified to ANSI/NSF Standard 18, Manual Food and Beverage Dispensing Equipment
- ASSE 1022 Approved Dual Check with Atmospheric Vent
- 316 stainless steel body for corrosion resistance
- Maximum operating pressure 150 PSI

Part Number	Description
61657	SD3, Dual Check Valves with Atmospheric Port Includes Strainer, Designed for Carbonated Beverage Equipment.
61678	SD3, Dual Check Valves with Atmospheric Port, Desinged for Carbonated Beverage Equipment.
61894	9BD, Inline Backflow Preventor 3/8" MFL
0384766	Plastic Wye Strainer for SD-3 Backflow, 3/8" FPT



[61657](#)



[61678](#)



[61894](#)



[0384766](#)



CARBONATORS & WATER BOOSTERS

BACKFLOW PREVENTERS

Backflow Preventers are designed to prevent CO2 from back flowing into the water supply.

Part Number	Description
S470-4F4	Backflow Preventer, 1/4 MFL x 1/4 FFL
S470-4P4	Backflow Preventer, 1/4 MFL x 1/4 NPT
S470DVVF44X	Backflow Preventer, 1/4 FFL x 1/4 MFL
S470-H4H4	Backflow Preventer, 1/4" Barb
S470-H6H6	Backflow Preventer, 3/8" Barb
19-0437	Double Backflow Preventer, 3/8 MFL
S470D-66	Double Backflow Preventer, 3/8 MFL Non Vented
S470DVV66X	Backflow Preventer, 3/8" MFL, Assembly 1032
S470DVV6F6X	Backflow Preventer, 3/8" MFL x FFL, Assembly 1032
S470DVVP66X	Backflow Preventer, 3/8" MPT x MFL, Assembly 1032



[S470-4F4](#)



[19-0437](#)



[S470-4P4](#)



[S470D-66](#)



[S470DVVF44X](#)



[S470DVV66X](#)



[S470-H4H4](#)



[S470DVV6F6X](#)



[S470-H6H6](#)



[S470DVVP66X](#)

WATER PRESSURE REGULATORS

Flojet

Part Number	Description
01750-321C	Water Pressure Regulator, Inline, 30 PSI, 1/4" Barbed
01750-302C	Water Pressure Regulator, Inline, 50 PSI, 3/8" Barbed
01752-302C	Water Pressure Regulator, Inline, 50 PSI, 3/8" Barbed
01750-322C	Water Pressure Regulator, Inline, 30 PSI, 3/8" Barbed
01750-352C	Water Pressure Regulator, Inline, 15 PSI, 3/8" Barbed
01752-352C	Water Pressure Regulator, Inline, 15 PSI, 10/13mm Barbed



[01750-302C](#)



[01752-302C](#)

Shurflo

Part Number	Description
183-130-SS	Water Pressure Regulator, 30 PSI, 3/8" SS Barbed Fittings
183-150-PG	Water Pressure Regulator, 50 PSI, Gauge, 3/8" SS Barbed Fittings
183-150-SS	Water Pressure Regulator, 50 PSI, 3/8" SS Barbed Fittings
183-165-SS	Water Pressure Regulator, 65 PSI, 3/8" SS Barbed Fittings
94-760-00	Inline Water Pressure Gauge 3/8" Barb / Tee Fitting Assembly



[183-150-PG](#)



[183-165-SS](#)



[94-760-00](#)



[0009828](#)



[62-1G](#)

Watts

Part Number	Description
0009828	263A 10-125 PSI Lead Free, 3/8" FNPT, w/ Gauge Port
62-1G	263A With 60 PSI Gauge

PROTECTIVE CAPS

Part Number	Description
04-0044	Cap Protective Red 1/4 Tubing 7/16-20 Threads
04-0045	Cap Protective Red 3/8 Tubing 5/8-18 Threads



[04-0044](#)



[04-0045](#)



CARBONATORS & WATER BOOSTERS

WATER BOOSTERS

McCann's Economy Water Boosters control pressure fluctuations from incoming water systems and provides consistent water flow to beverage dispensing equipment. Stainless steel water tank features McCann's proprietary diaphragm design. Made from NSF Certified food grade butyl rubber and designed to completely evacuate water from the tank when incoming water supply is shut off. Durable Aquatec pump/motor combo. Stainless steel fittings throughout. Schrader connection for easy tank pressure check. 180 PSI pressure relief valve. Vibration dampening feet on both booster base and pump effectively control noise during operation.

Part Number	Description
16-3172-3/8	Econo Booster, 115V, 1/5 HP, 2 Gallon SS Tank, 100 GPH, 3/8" Barb
16-3174-3/8	Econo Booster, 115V, 1/5 HP, 4.4 Gallon SS Tank, 100 GPH, 3/8" Barb
16-0166	Replacement Diaphragm Pump Motor Aquatec 115V/60HZ 1.3 Amp



[16-3172-3/8](#)



[16-3174-3/8](#)

Shurflo Water Boost Systems increase flow and pressure to carbonated and non-carbonated soda valves for consistent drink quality. Maximizes filter life on filtration systems. Ports: 3/8" barb.

- Both models feature Shurflo reliable 8025 and 8095 Series pumps
- Pumps and tanks are NSF/UL/CSA-listed
- Can run dry without damage
- Self-priming up to 8.0 vertical feet [2.4 m]
- Replacement bladder design not available on mini model

Part Number	Description
804-002	Mini Water Booster System, 115V, 90 PSI, 21 oz Tank
62-804-002	Mini Water Booster System, 115V, 90 PSI, 21 oz Tank + John Guest Flare Adapters
804-023	Medium Water Booster System, 115V, 90 PSI, 2 Gallon Tank



[804-002](#)



[804-023](#)

Shurflo Pumps

Part Number	Description
8025-213-236	Water Booster Pump, 115V, 60 PSI, 1.4 GPM
8025-933-399	Water Booster Pump, 115V, 90 PSI, 1.6 GPM
8029-332-009	Delivery Pump With Cord, Built-In Check Valve, 115V, 75 PSI
8005-233-236	Delivery Pump Non-Corded 3/8-18 NPT Female Ports, Built-In Check Valve, Demand Switch, 115V, 60 PSI, 1.5 GPM
2088-594-144	Transfer Delivery Pump, 6' Cord, 115VAC, 45 PSI, 3.3 GPM
181-201	Accumulator Tank 21 oz. for Mini Water Booster



[8025-933-399](#)



[2088-594-144](#)

Flojet Water Booster Replacement Pumps are designed for supplying consistent water pressure to beverage dispensers, coffee machines, water filtration systems, carbonators & ice machines.

Part Number	Description
G60-1215A	Water Booster Pump, Flojet G60 with Large Muffler, 1/2" Plastic In/Out, 90 PSI, 4 GPM
G601233K	Water Booster Pump, Flojet G60, CO2 Straight, 1/2" In/Out



G60



About APEX

Apex Beverage Equipment Distribution Group, LLC is a nationally-recognized beverage equipment distribution company proud to represent the finest beverage dispensing equipment, parts and accessories available in the industry.

Apex is staffed with industry veterans who have an extensive history of technical knowledge and the versatility to understand and assist our customers on a daily basis. Our knowledgeable staff strives to gain a thorough understanding of our customers' needs in order to develop valuable solutions. Our success is derived from our people.

Centrally located, Apex has a vast supply of beverage dispensing equipment, components and replacement parts readily available for every fountain, ice, juice, beer, frozen, coffee, tea or water filtration installation, service and maintenance need.

Apex is a service-oriented, solution provider with the ability to customize parts kits, BIB rack systems, pump panels, juice carts, and also offers remanufacturing services.

Apex works diligently with manufacturers and logistics companies to continuously offer the most cost effective solutions to our customers. Timely delivery with attention to detail is our primary goal.





This image shows a full page of white paper with horizontal ruling lines. The lines are evenly spaced and extend across the width of the page, typical of notebook or legal stationery. There are no margins, text, or other markings present.

