

# Dispensing Valves



*Apex offers a full line of high quality dispensing valves, valve IDs, brix and ratio devices, parts and accessories for all beverage dispensers.*



DISPENSING *Refreshing* RESULTS



# DISPENSING VALVES

## LEV® POST-MIX VALVES

The Lancer Electric Valve (LEV®) is the best in class and best selling valve on the market. It is built with the highest quality materials and proven technology to provide our customers with consistent drink quality and reliability.

- Lowest "Life Cost" of operation available
- Simple design gives high reliability
- Widest range of ratio control (2:1 - 10:1 water/syrup)
- Tamper-proof ratio setting

LEV 3.0: 1.5 - 3.0 Oz Per Second

LEV 4.5: 2.5 - 4.5 oz per second

Flow pressure: Water: 40 - 110 psig (2.8 - 7.7 bar)  
Syrup (Sugar): 20 - 70 psig (1.4 - 4.9 bar)  
Syrup (Diet/Light): 10 - 70 psig (0.7 - 4.9 bar)

Electrical: 24V, 50/60 Hz

LEV Mounting Block: Same screw hole pattern as Dole SEV, FFV, Cornelius UF1, SF1, and McCann Turbo Flo Jr.



### Self-Serve Lever Valves

Part Number	Description	Application
<a href="#">19-0120/03</a>	LEV 3.0 Self-Serve Lever With Mounting Block	Soda
<a href="#">19-0305/03</a>	LEV 3.0 Self-Serve Lever With Front Soda Lever And Mounting Block	Soda
<a href="#">19-0191/03</a>	LEV 4.5 Self-Serve Lever With Mounting Block	Soda
<a href="#">19-0311/03</a>	LEV 4.5 Self-Serve Lever With Front Soda/Water Lever And Mounting Block	Soda
<a href="#">19-0312/03</a>	LEV 4.5 Self-Serve Lever With Sold Out Light	Soda

### Portion Control Valves

Part Number	Description	Application
<a href="#">19-0198/03</a>	LEV 3.0 Portion Control With Mounting Block	Soda
<a href="#">19-0213/03</a>	LEV 4.5 Portion Control With Mounting Block	Soda
<a href="#">19-0214/03</a>	LEV 4.5 Portion Control With Front Soda/Water Lever And Mounting Block	Soda

### Push Button Valves

Part Number	Description	Application
<a href="#">19-0114/03</a>	LEV 3.0 Push Button With Mounting Block	Soda
<a href="#">19-0115/03</a>	LEV 3.0 Push Button With Side Soda/Water Lever And Mounting Block	Soda
<a href="#">19-0185/03</a>	LEV 4.5 Push Button With Mounting Block	Soda
<a href="#">19-0306/03</a>	LEV 3.0 Push Button With Front Soda/Water Lever And Mounting Block	Soda

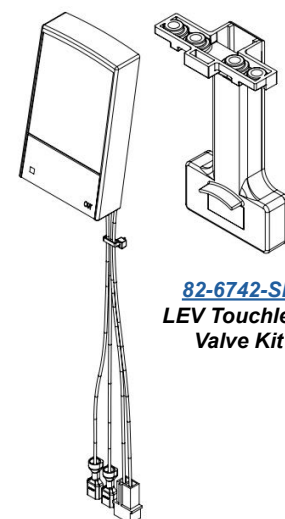
### EasyFill Valves

Part Number	Description	Application
<a href="#">19-0513/04</a>	LEV Easyfill 3.0 With Mounting Block	Soda
<a href="#">19-0516/04</a>	LEV Easyfill 4.5 With Mounting Block	Soda

### Crew Serve Short Lever Valves

Part Number	Description	Application
<a href="#">19-0077/03</a>	LEV 3.0 Crew Serve Short Lever With Mounting Block	Soda
<a href="#">19-0078/03</a>	LEV 3.0 Crew Serve Short Lever With Side Soda/Water Lever And Mounting Block	Soda
<a href="#">19-0177/03</a>	LEV 4.5 Crew Serve Short Lever With Mounting Block	Soda

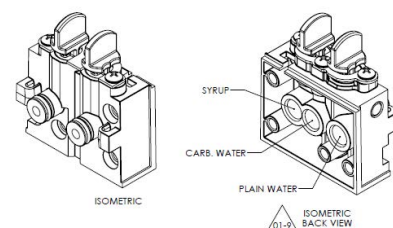
Variations of these valves are available, such as without block and/or cover



**82-6742-SP**  
**LEV Touchless**  
**Valve Kit**



**82-2658/01**  
**3-Way Mounting**  
**Block Assembly**

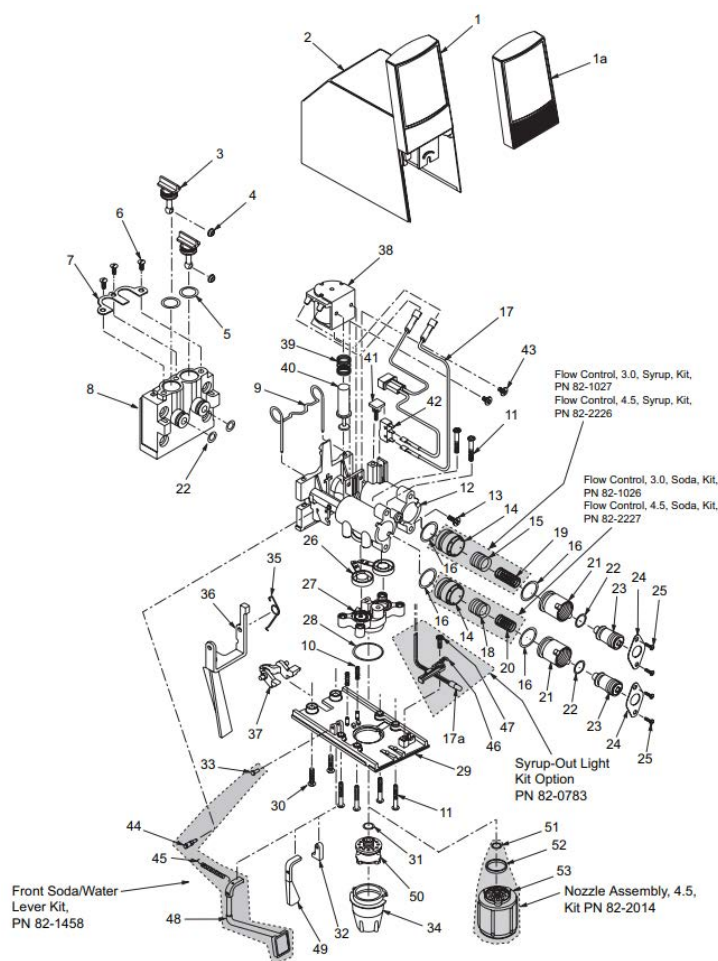




# DISPENSING VALVES

## LEV® POST-MIX VALVES

Item Number	Part Number	Description
1	<a href="#">05-0287</a>	ID Panel
1a	54-0057	ID Panel (Syrup-Out)
2	<a href="#">54-0029</a>	Cover Sub Assy
-	<a href="#">54-0030-SP</a>	Cover Assy (Item No. 1-2)
-	54-0059	Cover Assy (Item No. 1a-2)
3	<a href="#">05-0266</a>	Stem, Valve, Mounting Block
4	<a href="#">05-0267</a>	Washer
5	<a href="#">02-0047</a>	O-Ring
6	<a href="#">04-0269-SP</a>	Screw
7	<a href="#">03-0087</a>	Retainer, Stem, Valve, Mounting Block
8	<a href="#">05-0265</a>	Mounting Block
-	<a href="#">82-0274-SP</a>	Block Assy, Mounting (Item No. 3-8, 22)
-	<a href="#">82-2658/01</a>	3-Way Mounting Block Assembly
9	<a href="#">03-0233</a>	Retainer, Valve, 1-Piece
10	<a href="#">03-0143</a>	Spring, Pin, LEV
11	<a href="#">04-0270-SP</a>	Screw
12	<a href="#">54-0189/01-SP</a>	Body Upper Assy 3.0 / 4.5 Oz/Sec
13	<a href="#">04-0302-SP</a>	Screw
14	<a href="#">81-0274-01</a>	Sleeve, Syrup/Water, 3.0
-	<a href="#">81-0382-01</a>	Sleeve, Syrup/Soda, 4.5
15	<a href="#">81-0273</a>	Piston, Syrup, 3.0
-	<a href="#">81-0383</a>	Piston, Syrup, 4.5
16	<a href="#">02-0132/01</a>	O-Ring
17	<a href="#">52-0622</a>	Wire Harness
17a	<a href="#">52-0902/02</a>	Wire Harness (Syrup-Out)
18	<a href="#">81-0275/01-01</a>	Piston, Water, 3.0
-	<a href="#">81-0384/01</a>	Piston, Water, 4.5
19	<a href="#">03-0169</a>	Spring, Syrup, Flow Control, LEV
20	<a href="#">03-0171</a>	Spring, Soda, Flow Control, LEV
21	<a href="#">05-0262</a>	Bonnet, Flow Control
22	<a href="#">02-0126</a>	O-Ring
23	05-1919	Plug, Adjustment, Flow Control, White
-	<a href="#">82-0527/01</a>	Plug, Adjustment Assy, White (Item No. 16, 21-23)
24	<a href="#">03-0088/02</a>	Retainer, Flow Control
25	<a href="#">04-0267/02-SP</a>	Screw
26	82-2929	Arm, Paddle, Assy
27	<a href="#">54-0046</a>	Body Assy, Lower, 3.0
-	<a href="#">54-0188-SP</a>	Body Assy, Lower, 4.5
28	02-0408	O-Ring, Nozzle, Red, 3.0 (Used In Valves Produced Through September 1998)
29	<a href="#">05-0232/04</a>	Plate, Bottom, 3.0
-	<a href="#">05-1108</a>	Plate, Bottom, 4.5
30	<a href="#">04-0310-SP</a>	Screw
31	<a href="#">02-0133/01</a>	O-Ring (Used In Valves Produced Through September 1998)
32	<a href="#">05-0281/01</a>	Plug, Bottom Plate Plastic
33	<a href="#">04-0775-SP</a>	Pin, Lever, Soda
34	05-0233	Nozzle, 3.0 (Used In Valves Produced Through September 1998)
-	<a href="#">05-1463/03</a>	Nozzle, 3.0 (Used In Valves Produced In September 1998 And Later)
35	<a href="#">03-0081</a>	Lever, Spring, Electric
36	<a href="#">05-0231/01</a>	Lever Short LEV Electric Valve
37	<a href="#">05-0238/06</a>	Yoke, Electric



Item Number	Part Number	Description
38	<a href="#">52-0288/04-SP</a>	Coil Assy, LEV
39	<a href="#">03-0125</a>	Spring, Solenoid, LEV
40	<a href="#">10-0117/04</a>	Armature, LEV
41	<a href="#">05-0935/02</a>	Plug, Retainer, Micro-Switch
42	<a href="#">26-0265/02</a>	Micro-Switch (Cherry Switch)
43	<a href="#">04-0486-SP</a>	Screw
44	<a href="#">04-0724</a>	Pin, Stud
45	<a href="#">03-0238</a>	Spring, Front Soda/Water Lever
46	<a href="#">05-0490/03</a>	Holder, Push Button & Lamp, Plastic
47	<a href="#">04-0470-SP</a>	Screw
48	<a href="#">09-0120/02</a>	Lever, Front, Soda/Water
49	<a href="#">05-0274/01</a>	Lever, Soda, 3.0
50	54-0028	Diffuser Assy, 3.0 (Used In Valves Produced Through September 1998)
-	<a href="#">05-3261</a>	Diffuser Assy, 3.0 (Used In Valves Produced In And After September 1998)
51	<a href="#">02-0133/01</a>	O-Ring
52	<a href="#">02-0421</a>	Seal, Nozzle, 4.5
53	54-0183/04	Nozzle Assy, 4.5
	<a href="#">82-1026</a>	Flow Control Soda Ceramic Replacement Kit
	<a href="#">82-1027</a>	Flow Control Syrup Ceramic Replacement Kit
	<a href="#">82-2014/03-SP</a>	Nozzle Assembly 2-Shot LEV 4.5 Oz/Sec
	<a href="#">82-5172</a>	Front Soda/Water Push Button Valve Kit
	<a href="#">82-5262/01</a>	Blue Front Soda/Water Push Button LEV Valve ADA Kit For Sensation 44
	<a href="#">Z02205GT</a>	Portion Control Easy Touch



## VERSA POUR VALVES (AKA: LPV & GMV)

The VersaPour valve is built with the highest quality materials and proven technology to provide our customers with consistent drink quality and reliability.

- Lowest "Life Cost" of operation available
- Simple design gives high reliability
- 3 oz/second flow rates
- Widest range of ratio control (3.0 - 9.0 water/syrup)

VersaPour: 1.5 - 3.0 Oz Per Second

Flow pressure: Water: 40 - 110 psig (2.8 - 7.7 bar)  
Syrup (Sugar): 20 - 70 psig (1.4 - 4.9 bar)  
Syrup (Diet/Light): 10 - 70 psig (0.7 - 4.9 bar)

Electrical: 24VAC ±10%, 50/60 Hz

VersaPour: Same screw hole pattern as Dole SEV, FFV,  
Mounting Block: Cornelius UF1, SF1, and McCann Turbo Flo Jr.

Push Button   Portion Control   Self-Serve Lever   Easyfill



### Self-Serve Lever Valves

Part Number	Description	Application
<a href="#">19-73311</a>	LPV 3.0 VersaPour Self-Serve Lever	Soda
<a href="#">19-73311-MB</a>	LPV 3.0 VersaPour Self-Serve Lever With Mounting Block	Soda
<a href="#">19-73311-MB-FSL</a>	LPV 3.0 VersaPour Self-Serve Lever With Front Soda Lever And Mounting Block	Soda
<a href="#">19-73311-MLMB</a>	LPV 3.0 VersaPour Self-Serve Metal Lever With Mounting Block	Soda

### Portion Control Valves

Part Number	Description	Application
<a href="#">19-73331</a>	LPV 3.0 VersaPour Portion Control	Soda
<a href="#">19-73331-MB</a>	LPV 3.0 VersaPour Portion Control With Mounting Block	Soda

### Push Button Valves

Part Number	Description	Application
<a href="#">19-73321</a>	LPV 3.0 VersaPour Push Button	Soda
<a href="#">19-73321-MB</a>	LPV 3.0 VersaPour Push Button With Mounting Block	Soda

### EasyFill Valves

Part Number	Description	Application
<a href="#">19-73341/01</a>	LPV 3.0 VersaPour EZ-Fill	Soda
<a href="#">19-73341/01-MB</a>	LPV 3.0 VersaPour EZ-Fill With Mounting Block	Soda

*Variations of these valves are available,  
such as with front soda lever, or without the cover.*





# DISPENSING VALVES

Self-Serve, Portion Control & Push Button

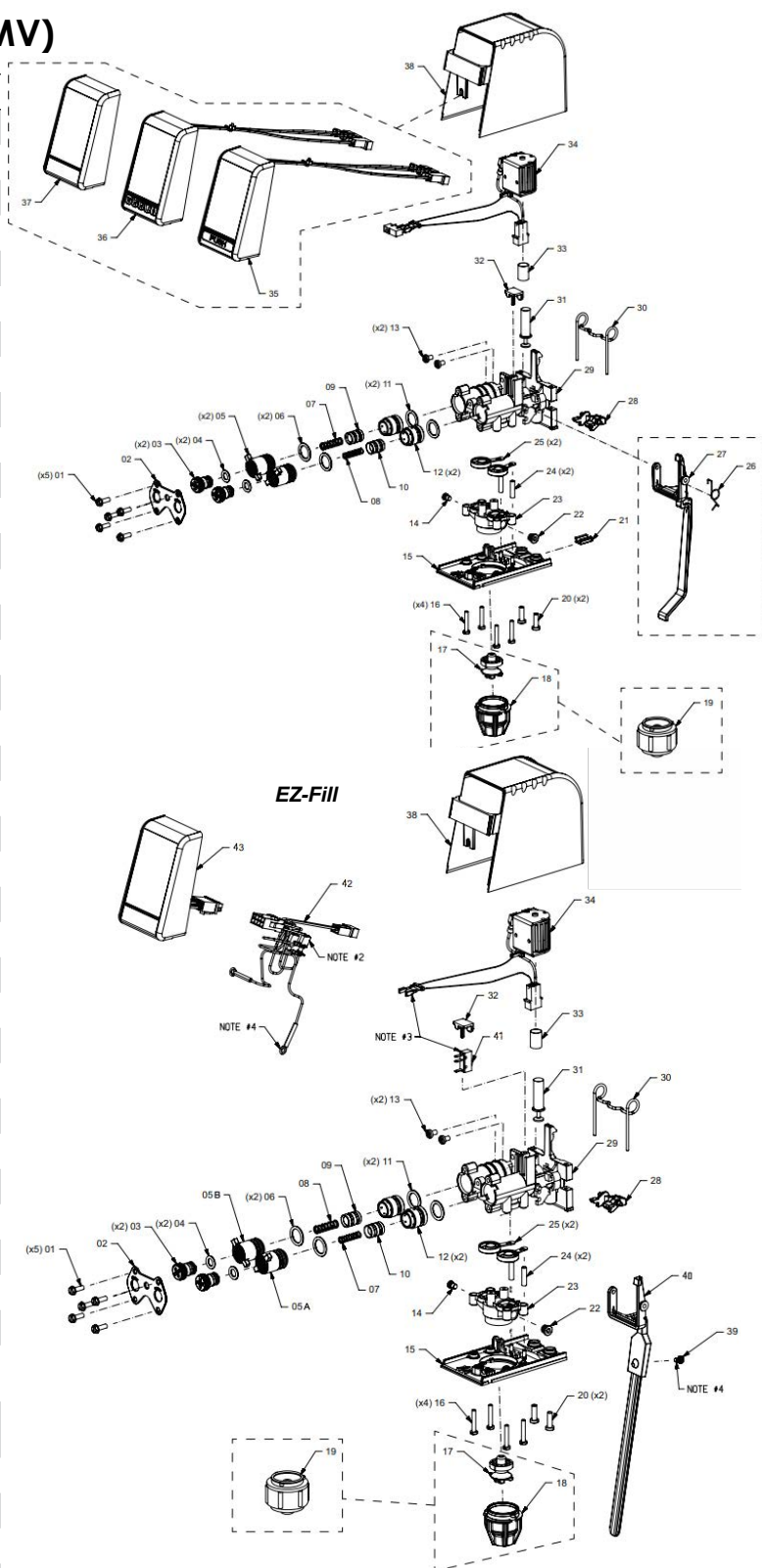
## VERSA POUR VALVES (AKA: LPV & GMV)

Item Number	Part Number	Description
1	<a href="#">04-0267/02-SP</a>	Screw, 8-16 x .5, Plastic, HHSW/W, SS
2	<a href="#">03-0433/02</a>	Retainer, Flow Control, Dual, SS GMV/LPV
3	05-1919	Plug, Adjust, Flow Control, White
4	<a href="#">02-0126</a>	O-Ring, 2-109, 97-0999
5A	<a href="#">05-0262/04</a>	Bonnet, Flow Control, GMV SSL, PB, PC
5B***	05-0796/02	Bonnet, Flow Control GMV EZ-Fill
6	<a href="#">02-0132/01</a>	O-Ring, 2-113, 97-0999
7	<a href="#">03-0171</a>	Spring, Soda Flow Control, GMV/LPV
8	<a href="#">03-0169</a>	Spring, Syrup Flow Control, GMV/LPV
9	<a href="#">81-0275/01-01</a>	Piston, Water, Ceramic, 3.0 GMV/LPV
10	<a href="#">81-0273</a>	Piston, Syrup, Ceramic, 3.0 GMV/LPV
11	<a href="#">02-0132/01</a>	O-Ring, 2-113, 97-0999
12	<a href="#">81-0274-01</a>	Sleeve, Syrup/Water, Ceramic, 3.0 GMV/LPV
13	<a href="#">04-0486-SP</a>	Screw, 8-32 x .270, PLNHD, PH/SL, MS
14	05-0234/01	Plug, Small
15	<a href="#">05-1108/03-SP</a>	Plate, Bottom, GMV/LPV
16	<a href="#">04-0270-SP</a>	Screw, 6-19 x .910, PHD, PH/SL, PLT
17	<a href="#">05-1593/04</a>	Diffuser, One Piece
18	<a href="#">05-3242-SP</a>	Nozzle, Black, GMV/LPV
19	54-0183/04	Nozzle Assy, 2-Shot 4.5 Oz/Sec
20	<a href="#">04-0310-SP</a>	Screw, 8-16 x .600, PHD, PH/SL, PLT
21*	<a href="#">05-0491/01</a>	Filler, GMV/LPV, Push Button
22	05-0235	Plug, Large
23	05-1109/01	Body, Lower, Pressure, 4.5 Oz/Sec
24	<a href="#">03-0143</a>	Spring, Pin, GMV/LPV
25	<a href="#">82-3869/01-SP</a>	Paddle Arm, Simrit Compound C
26**	<a href="#">03-0081</a>	Spring, Lever, GMV/LPV
27**	<a href="#">05-0776/02</a>	Lever, Electric, Self-Serve, GMV/LPV
28	<a href="#">05-0238/06</a>	Yoke, Electric, GMV/LPV
29	05-1110/04	Body Upper, GMV/LPV
30	<a href="#">03-0233</a>	Retainer, 1-Piece, GMV/LPV
31	<a href="#">10-0117/04</a>	Armature, GMV/LPV
32	<a href="#">05-0935/02</a>	Plug, Cherry Switch, Self-Serve, EZ-Fill
33	<a href="#">03-0125</a>	Spring, Solenoid, GMV/LPV
34	<a href="#">52-1248/03</a>	Coil/Harness Assy, GMV/LPV
35	52-3630/04	ID Panel Assy, Lancer Performance Valve, Push Button
36	<a href="#">52-3632/04</a>	ID Panel Assy, Lancer Performance Valve, Portion Control
37	<a href="#">05-3241-SP</a>	ID Panel, Black, GMV/LPV
38	<a href="#">05-3240-SP</a>	Cover, Black, GMV/LPV
39***	04-0642	Screw, 6-32 x .250, PHD W/EXT SW, PH
40***	<a href="#">54-0479/01-SP</a>	Lever, EZ-Fill Assembly
41***	<a href="#">12-0244</a>	Switch, SPST, 5A, 250V, MDM
42***	52-3310	Harness, EZ-Fill, Valve Assy
43***	52-3638	ID Panel Assy, LPV, EZ-Fill

\* only applicable in Versa Pour PB, PC

\*\* only applicable in Versa Pour SSL

\*\*\* only applicable in Versa Pour EZ-Fill



Item Number	Part Number	Description
	<a href="#">05-0287/02-SP</a>	ID Panel, Basic Lift-Off, GMV/LPV
	<a href="#">52-0288/04-SP</a>	Coil Assembly GMV/LPV
	<a href="#">54-0140-SP</a>	ID Panel Assembly Mechanism Large Push Button GMV/LPV
	<a href="#">54-0029/02-SP</a>	Cover Subassy Lift Off GMV/LPV
	<a href="#">54-0030-SP</a>	Cover Assembly GMV/LPV



## ECO POUR VALVE (AKA: LMV)

ECO-friendly and ECONomical.

- A mechanical actuation that requires no electricity and works under brown or black-out conditions
- Clever and ultra-reliable design eliminates the two leading causes (solenoid and switch activation) of service calls/failure
- Lowest life cost valve delivers reliable performance at a sensible price and continued savings from a lack of energy consumption

EcoPour: 1.5 Oz Per Second

Flow pressure: Water: 40 - 100 psig (2.8 - 6.89 bar)  
Syrup (Sugar): 40 - 80 psig (2.8 - 5.5 bar)  
Syrup (Diet/Light): 40 - 80 psig (2.8 - 5.5 bar)

Electrical: N/A

EcoPour: Same screw hole pattern as Dole SEV, FFV,  
Mounting Block: Cornelius UF1, SF1, and McCann Turbo Flo Jr.

Part Number	Description	Application
<a href="#">19-71110</a>	EcoPour 1.5 Self-Serve Lever Front Water Post-Mix Mechanical Valve, Adjustable Syrup Flow	Soda



Adjustable  
Syrup Flow  
Compensator

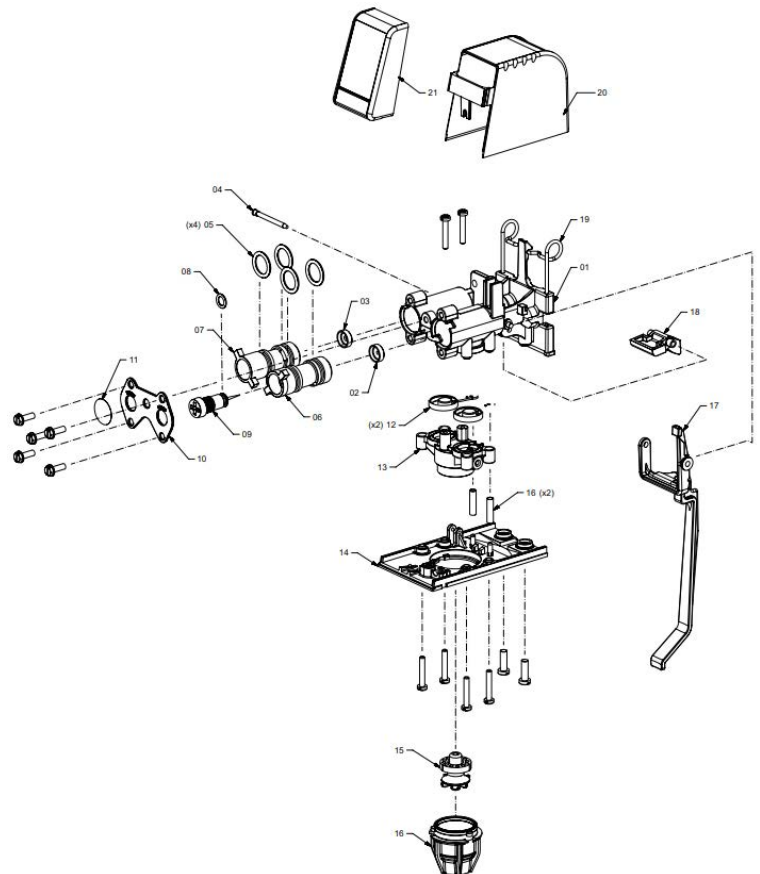
Easy Grip  
Nozzle

No Solenoid

Fixed  
Water Rate

No Adjustments  
Needed

Item Number	Part Number	Description
1	05-1110/04	Body Upper, LEV
2	05-3279	Flow Washer, Syrup, Eco-Pour
3	05-3280	Flow Washer, Water, Eco-Pour
4	05-3238	Pin, Stay, Eco-Pour
5	<a href="#">02-0132/01</a>	O-Ring
6	05-3257	Stator, Syrup, Eco-Pour
7	05-3258	Stator, Water, Eco-Pour
8	02-0157	O-Ring, 5-052, 97-099
9	54-0532	Syrup Adjuster, LCV 1.50
10	<a href="#">03-0433/02</a>	Retainer, Flow Control, Dual, LEV, SS LEV
11	06-3134	Seal, 0.75 Dia, Perm ADH
12	<a href="#">82-3869/01-SP</a>	Paddle Arm, SIMRIT Compound C
13	<a href="#">54-0046</a>	Body Assy, Lower
14	<a href="#">05-1108/03-SP</a>	Plate, Bottom, LEV
15	<a href="#">05-1593/04</a>	Diffuser, One Piece
16	<a href="#">05-3242-SP</a>	Nozzle, Black, GMV
17	<a href="#">05-0776/02</a>	Lever, Electric, Self-Serv, LEV
18	05-3237	Cam, Rocker Arm, Eco-Pour
19	<a href="#">03-0233</a>	Retainer, 1-Piece, LEV
20	<a href="#">05-3240-SP</a>	Valve Cover, Black, GMV
21	<a href="#">05-3241-SP</a>	ID Panel, Black, GMV





## LANCER FLOW CONTROL VALVES (AKA: LFCV)

The LFCV valve is used in dispensers with touchscreen or multi-flavor selections:

- IBD BOLD 30i™
- Unicorn
- Flavor Select
- Twin Pour
- Bevariety
- Bar Bridge
- Bridge Tower
- Touchscreen Tower (TST)

Part Number	Description
<a href="#">82-3820</a>	LFCV Bonus Injector Assy, Sealed 0.2 Restrictor With Adapter
<a href="#">82-3822</a>	LFCV Sealed 2.0 Soda With Adapter
<a href="#">19-1011-SP</a>	LFCV 3.0 Soda Gray S Valve Assembly
<a href="#">19-1010-SP</a>	LFCV 3.0 Syrup Black Sc Valve Assembly
<a href="#">82-3823</a>	LFCV Sealed 3-4.5 Syrup Assy With Adapter
<a href="#">82-3824</a>	LFCV Sealed 3-4.5 Soda/Water Assy With Adapter
<a href="#">19-1000</a>	LFCV Valve Assembly 4.5 Syrup Black Sc
<a href="#">82-3819</a>	LFCV Sealed Retrofit Kit
<a href="#">82-4020/01</a>	LFCV Solenoid Rebuild Kit
<a href="#">54-0289/02-SP</a>	Nozzle Assembly Multiflavor STHLND Dosing
<a href="#">82-3286/08</a>	Switch Assembly PWM 2L / 2R ADA
<a href="#">82-2317/01-SP</a>	Block Mounting Assembly Single



[19-1000](#)

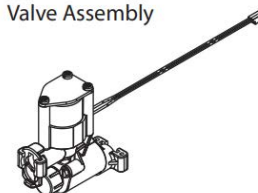


[82-3820](#)

### LFCV Valve Assemblies

82-3820	LFCV, Bonus Injector
82-3823	LFCV, 3.0 - 4.5, Syrup Assy
82-3824	LFCV, 3.0 - 4.5, Soda/Water Assy

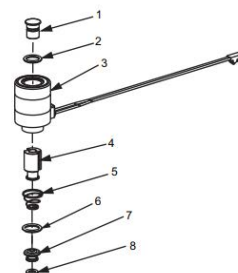
### Valve Assembly



### LFCV Spare Parts

1	10-0430/05	Plug Nut
2	02-0538	O-Ring
3	12-0364/04-01	Coil, LFCV
4	23-1301/01	Core Seal Assy
5	03-0180/02	Spring, Core
6	02-0109	O-Ring
7	05-1745/02	Seat, LFCV
8	02-0133	O-Ring

### Spare Parts



### LFCV Kit

82-4020	LFCV Rebuild Kit
---------	------------------

## T&S WATER VALVE

Lancer ID4400 counter top self service ice dispensers can accomodate a T&S water glass filler valve, part number 19-0036.



[19-0036](#)





## FLOMATIC VALVES

Flomatic valves are available in sanitary push lever and push button configurations. Automatic fill lever, and portion control models are available upon request. Modular in design they are suitable for carbonated and non-carbonated applications. Apex Beverage Equipment Distribution Group carries a full line of Flomatic valves and replacement parts to meet your service needs.

Part Number	Description
<a href="#">424-CF-E36-1521-WJ</a>	Juice Valve (WJ) Plastic Sanitary Lever
<a href="#">424-CF-S36-1525-WJ</a>	Juice Valve (WJ) Push Button
<a href="#">424-CF-E36-1521</a>	3.0 oz./sec: Dual Flow Controls, Plastic SSL
<a href="#">424-CF-S36-1525</a>	3.0 oz./sec: Dual Flow Controls, Push Button
<a href="#">464-GP-E36-1621</a>	2-4 oz./sec: Dual Flow Controls, Plastic SSL
<a href="#">464-GP-S36-1625</a>	2-4 oz./sec: Dual Flow Controls, Push Button
<a href="#">464-GP-SL36-1621</a>	2-4 oz./sec: Dual Flow Controls, Sanitary Lever

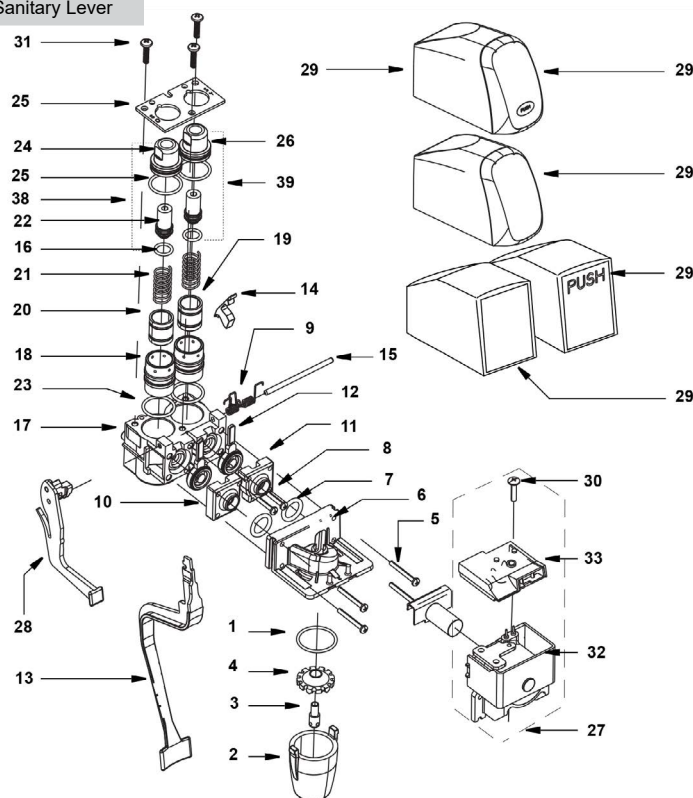


[424-CF-E36-1521-WJ](#)

[464-GP-SL36-1621](#)

## FLOMATIC 424 JUICE VALVE

Item Number	Part Number	Description
1	<a href="#">500</a>	O-Ring 0.112
2		Nozzle
a.	<a href="#">501-14</a>	Clear, Twist-Off
b.	<a href="#">501-15</a>	Black, Twist-Off
3	<a href="#">502-02</a>	Diffuser - Syrup
4	<a href="#">504-00</a>	Diffuser White - Soda
	<a href="#">504-00-B</a>	Diffuser Black - Soda
5	<a href="#">505</a>	Screw 4-40x1
6	<a href="#">507-26-B</a>	Diffuser Block 424 Insert
7	<a href="#">509</a>	O-Ring 0.112
8	<a href="#">510</a>	Screw - 4-40x5/8
9	<a href="#">511-04</a>	Coil Spring Pallet Retainer
10	<a href="#">512-02-G</a>	Orifice Cap GP - Left
11	<a href="#">513-02-G</a>	Orifice Cap GP - Right
12		Pallet Bearing Pad
a.	<a href="#">515-24</a>	Set
b.	<a href="#">515</a>	Pallet
13	<a href="#">516-09</a>	Lever Molded Sanitary
14		Lever Retainer
a.	<a href="#">517-00</a>	Manual Retainer
b.	<a href="#">517-05</a>	Electric Retainer
15	<a href="#">524-02</a>	Pivot PIN
16	<a href="#">551</a>	O-Ring 0.012
17	<a href="#">600-07-B</a>	Flow Control Base 424 #8
18	<a href="#">602-02</a>	Cylinder - Ceramic
19	<a href="#">603-02</a>	Piston - Syrup
20	<a href="#">604-02</a>	Piston - Soda
21	<a href="#">605-01</a>	Spring Flow Control 7 Coil
22	<a href="#">607</a>	Flow Rate Adjustment Screw
23	<a href="#">608</a>	O-Ring (0.017)
24	<a href="#">609</a>	Flow Rate Adjustment Nut
25	<a href="#">610-04</a>	Retainer Plate (14GA)

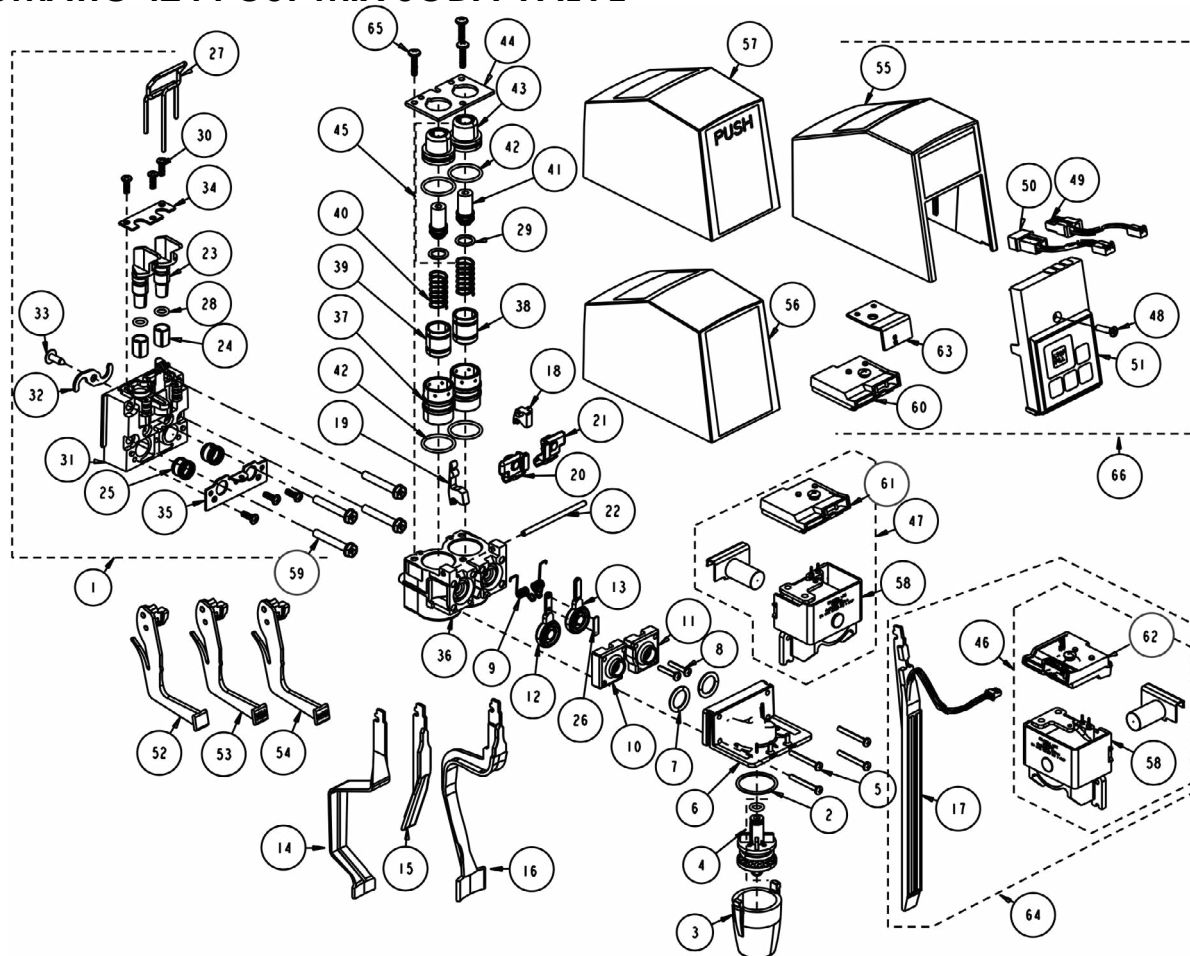


Item Number	Part Number	Description	Item Number	Part Number	Description
26	<a href="#">642-00</a>	Flow Rate Adjustment Set	36	<a href="#">1601</a>	GP Cover Base
27	<a href="#">774-E36</a>	AC Solenoid With Switch	37	<a href="#">1610</a>	GP Push Button Front Cover
28	<a href="#">1028-S</a>	Add a Lever (Soda)	38		Brix Adjustment Assembly
28	<a href="#">1028-W</a>	Add a Lever (Water)	a.	<a href="#">551</a>	O-Ring (0.012)
29	<a href="#">1521</a>	Cover - PL Black	b.	<a href="#">607</a>	Flow Rate Adjustment Screw
30	<a href="#">2611</a>	Screw 6-32 x 5/8	c.	<a href="#">608</a>	O-Ring (0.017)
31	<a href="#">020001284</a>	Screw #8 x 5/8	d.	<a href="#">609</a>	Flow Rate Adjustment Nut
32	<a href="#">9774-1</a>	AC Solenoid	39		Metering Assembly
33		Switch, MSL	a.	<a href="#">551</a>	O-Ring (0.012)
a.	<a href="#">5030419</a>	Manual Sanitary Lever	b.	<a href="#">607</a>	Flow Rate Adjustment Screw
b.	<a href="#">5030418</a>	Portion Control	c.	<a href="#">608</a>	O-Ring (0.017)
34	<a href="#">1525</a>	Cover - PB Living Hinge	d.	<a href="#">642-00</a>	Flow Rate Adjustment Set
35	<a href="#">1602</a>	GP Push Lever Cover		<a href="#">1094-TRUCK-424</a>	Flomatic 424 Parts Kit For Service Truck





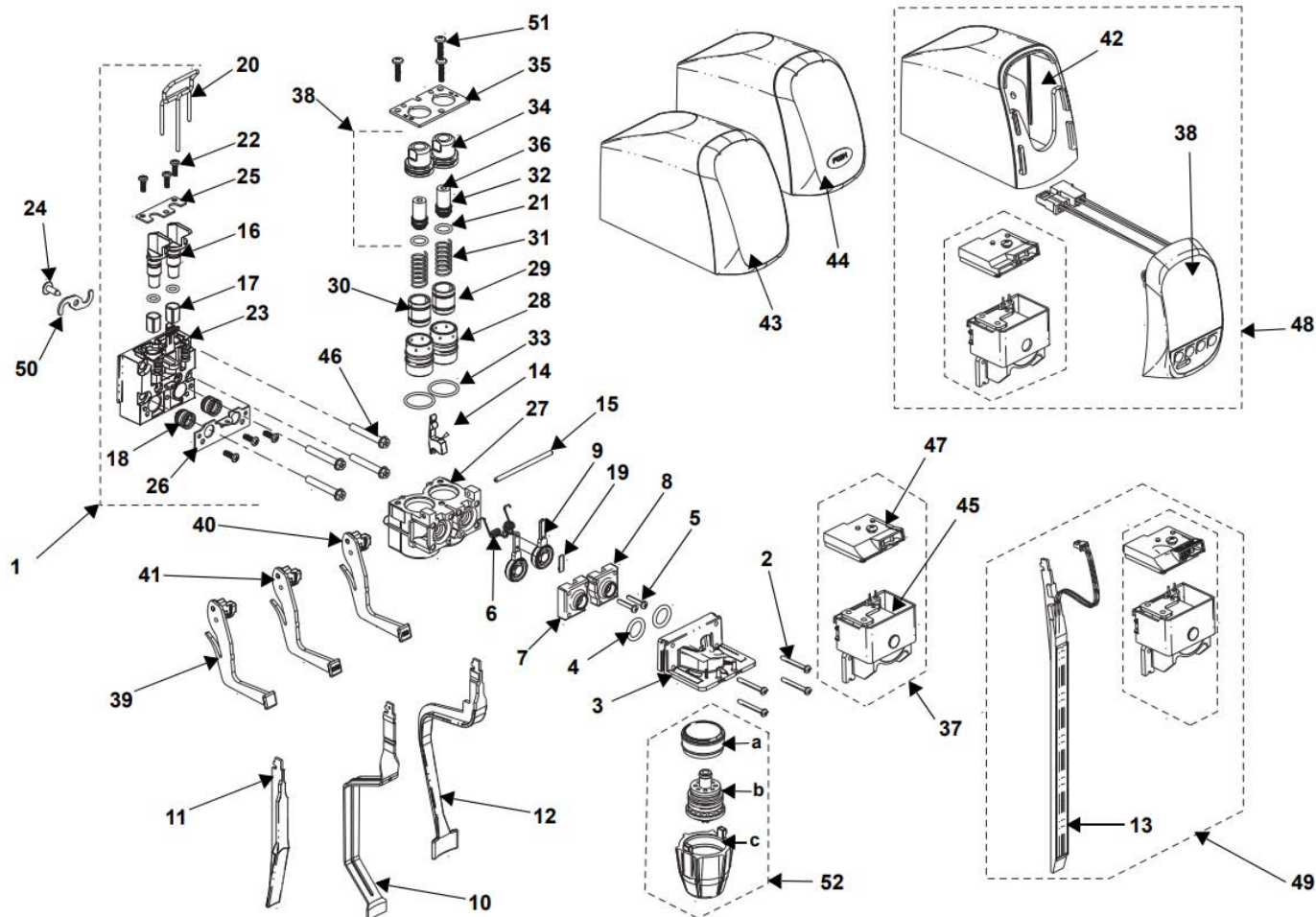
## FLOMATIC 424 POST-MIX SODA VALVE



Item Number	Part Number	Description	Item Number	Part Number	Description	Item Number	Part Number	Description
1	<a href="#">380-Q</a>	Mounting Block 0.38" Inlet	23	526	Shutoff Plug	45	<a href="#">642-00</a>	Flow Rate Adj Set
2	<a href="#">500</a>	O-Ring 21	24	<a href="#">527</a>	Seal Shut-Off	46	774-A36	Sol Autofill Sngl AC
3	<a href="#">501-24</a>	Nozzle Softpour Clear	25	<a href="#">528</a>	Seal Quad Valve	47	<a href="#">774-E36</a>	Sol MSL Sngl Yoke AC
	<a href="#">501-25</a>	Nozzle Black 424 Soda	26	<a href="#">530</a>	Bearing Pallet	48	805	Screw 6-32x5/8
4	<a href="#">504-10</a>	Diffuser Insert Set	27	<a href="#">538-04</a>	Latch Pin	49	817-02	Harness P32 PCM Lead
5	<a href="#">505</a>	Screw 4-40x1	28	<a href="#">543</a>	O-Ring 21	50	817-03	Harness PCM Power
6	507-26-B	Diffuser Insert Set	29	<a href="#">551</a>	O-Ring 012	51	<a href="#">832-01</a>	PCM 4 Cup P32
7	<a href="#">509</a>	O-Ring 21	30	553-00	Screw #6 x 3/8	52	1028	No Longer Available
8	510	Screw 4-40x1	31	<a href="#">562-80</a>	Body 380Q	53	<a href="#">1028-S</a>	Add a Lever (Soda)
9	<a href="#">511-04</a>	Spring Coil Pallet	32	<a href="#">5031205</a>	S-Clip	54	<a href="#">1028-W</a>	Add a Lever (Water)
10	<a href="#">512-01-B</a>	Orifice Black Set	33	<a href="#">565</a>	Screw 8x1/2	55	1500	Cover PC 400 Series
11	513-01-B	Orifice Black Set	34	567	Retainer Shutoff Plug	56	<a href="#">1521</a>	Cover PL
12	<a href="#">515</a>	Pallet	35	568	Retainer Quad Stem Seal	57	<a href="#">1525</a>	Cover PB Living Hinge
13	515-24	Pallet Bearing Pad	36	<a href="#">600-07-B</a>	Flow Ctrl Base 424 # 8	58	<a href="#">9774-1</a>	Solenoid Assembly
14	<a href="#">516-06</a>	Lever Sanitary SS	37	<a href="#">602-02</a>	Cylinder	59	<a href="#">5011953</a>	Screw 10-24x1-1/4 Self Tap
15	<a href="#">516-07</a>	Euro Lever PL	38	<a href="#">603-02</a>	Piston Syrup	60	<a href="#">5030418</a>	Switch, Portion Control
16	<a href="#">516-09</a>	Lever Sanitary Molded	39	<a href="#">604-02</a>	Piston Soda	61	<a href="#">5030419</a>	Switch, MSL
17	<a href="#">516-10</a>	Autofill Lever Sensor	40	<a href="#">605-01</a>	Spring Flow Control 7 Coil	62	5030421	Switch, Autofill
18	<a href="#">517-00</a>	Lever Retainer Mechanical		<a href="#">606-00</a>	Metering Pin Set	63	5030891	Brkt Portion Control AC
19	<a href="#">517-05</a>	Lever Retainer Electric	41	607	Screw Flow Rate Adj M	64	5031018	Kit AC Autofill Conv
20	521-01	Actuator Assembly Left	42	<a href="#">608</a>	O-Ring 017	65	020001284	Screw #8 x 5/8 PH Hi-Lo 18-8
21	522-01	Actuator Assembly Right	43	<a href="#">642-00</a>	Nut Flow Rate Adj	66	<a href="#">5031026</a>	Kit Conv Mech to PC Sngl
22	524-02	Pivot Pin Long	44	610-04	Retainer Plate 632		<a href="#">5028589</a>	Nozzle 424GP



## FLOMATIC 424-GP POST-MIX SODA VALVE



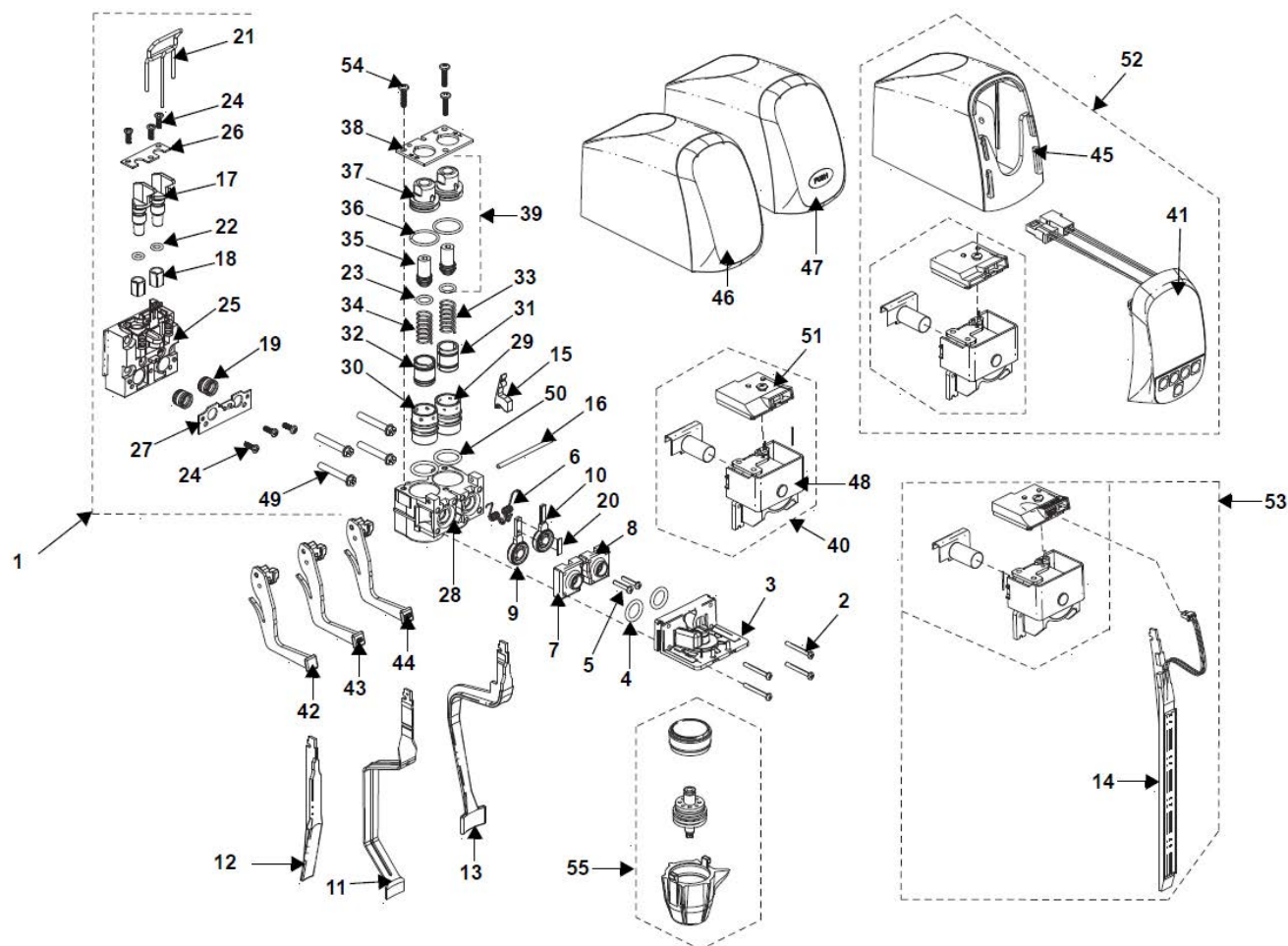
Item Number	Part Number	Description
1	<a href="#">380-Q</a>	Mounting Block 0.38" Inlet
2	<a href="#">505</a>	Screw 4-40 x 1
3	504-26-B	Diffuser Block 424 Inst
4	<a href="#">509</a>	O-ring (.112)
5	510	Screw - 4-40x5/8
6	<a href="#">511-04</a>	Spring Coil Pallet Retainer
7	<a href="#">512-01-B</a>	Orifice cap - left
8	513-01-B	Orifice cap - right
9	<a href="#">515-30</a>	Pallet Bearing Pad Set
10	<a href="#">516-06</a>	Sanitary Lever SS (SSL)
11	<a href="#">516-07</a>	Plastic Lever Black
12	<a href="#">516-09</a>	Sanitary Lever Molded
13	<a href="#">516-10</a>	Lever Sensor
14	<a href="#">517-05</a>	Elec Lever Retainer LG
15	524-02	Pivot Pin Long
16	526	Shutoff Plug
17	<a href="#">527</a>	Shutoff Seal
18	<a href="#">528</a>	Quad Seal Valve Stem
19	<a href="#">530</a>	Pallet Bearing
20	<a href="#">538-04</a>	Latch Pin
21	<a href="#">551</a>	O-ring (.012)

Item Number	Part Number	Description
22	553-00	Screw #6 x 3/8
23	<a href="#">562-80</a>	380Q Body
24	<a href="#">565</a>	Screw 8 x 1/2
25	567	Shutoff Retainer Plug
26	568	Quad Stem Seal Retainer
27	<a href="#">600-07-B</a>	Flow Control Base 424 #8
28	<a href="#">602-02</a>	Cylinder
29	<a href="#">603-02</a>	Syrup Piston
30	<a href="#">604-02</a>	Soda Piston
31	<a href="#">605-01</a>	Flow Control 7 Coil Spring
32	607	Flow Rate Adj Screw
33	<a href="#">608</a>	O-ring (.017)
34	609	Flow Rate Adj Nut
35	610-04	Retainer Plate 6-32
36	<a href="#">642-00</a>	Flow Rate Adj Set
37		Flow Rate Adj Set
a	<a href="#">774-A36</a>	Autofil
b	<a href="#">774-E36</a>	Manual
c	<a href="#">774-P36</a>	Portion Control
d	020003647	Push Button
38	835-01	464 PC Cover

Item Number	Part Number	Description
39	1028	No Longer Available
40	<a href="#">1028-S</a>	Add a Lever (Soda)
41	<a href="#">1028-W</a>	Add a Lever (Water)
42	1601	Base Cover
43	<a href="#">1602</a>	Front PL Cover
44	<a href="#">1610</a>	Front Push Button GP Cover
45	<a href="#">9774-1</a>	Solenoid Assembly
46	<a href="#">5011953</a>	Self Tap Screw 10-24x1-1/4
47		Switch
a	5030421	Autofil Switch
b	<a href="#">5030419</a>	Manual Switch
c	<a href="#">5030418</a>	Portion Control
48	5031015	Portion Ctrl AC Convn Kit
49	5031018	Autofil AC Convn Kit
50	<a href="#">5031205</a>	S-Clip
51	020001284	Screw #8x5/8 PH HI LO 18-8
52	<a href="#">020001750</a>	464 GEN II Nozzle Asm
a	N/A	Seal Ring
b	N/A	Diffuser Replacement Insert
c	N/A	Replacement Nozzle



## FLOMATIC 464-GP POST-MIX SODA VALVE



Item Number	Part Number	Description	Item Number	Part Number	Description	Item Number	Part Number	Description
1	<a href="#">380-Q</a>	Mtg Block 0.38	22	<a href="#">543</a>	O-Ring (010)	c.	<a href="#">774-P36</a>	Portion Control
2	<a href="#">505</a>	Screw 4-40x1	23	<a href="#">551</a>	O-Ring (012)	d.	020003647	Push Button
3	507-36-G	Diffuser Block 464 Insert	24	553-00	Screw #6x3/8	41	835-01	464 PC Cover
4	<a href="#">509</a>	O-Ring (.112)	25	<a href="#">562-80</a>	380Q Body	42	1028	No Longer Available
5	510	Screw 4-40x5/8	26	567	Retainer Shutoff Plug	43	<a href="#">1028-S</a>	Add a Lever (Soda)
6	<a href="#">511-04</a>	Spring Coil Pallet Retainer	27	568	Retainer Quad Stem Seal	44	<a href="#">1028-W</a>	Add a Lever (Water)
7	512-02-G	Orifice Cap GP Lft Blk	28	<a href="#">600-47-G</a>	Flow Ctrl Base 464 # 8	45	1601	Base Cover
8	513-02-G	Orifice Cap GP Rt Blk	29	<a href="#">602-02</a>	Cylinder	46	<a href="#">1602</a>	Front PL Cover
9	<a href="#">515-02</a>	Pallet Highflow	30	<a href="#">602-03</a>	Cylinder - HF	47	<a href="#">1610</a>	Front Push Button GP Cover
10	<a href="#">515-30</a>	Pallet Bearing Pad Set	31	<a href="#">603-02</a>	Syrup Piston	48	<a href="#">9774-1</a>	Solenoid Assembly
11	<a href="#">516-06</a>	Sanitary Lever SS (SSL)	32	<a href="#">604-04-G</a>	Soda Piston - GP	49	<a href="#">5011953</a>	Self Tap Screw 10-24x1-1/4
12	<a href="#">516-07</a>	Plastic Lever Black	33	<a href="#">605-01</a>	Flow Ctrl 7 Coil Spring	50	5028273	O-Ring Sleeve
13	<a href="#">516-09</a>	Sanitary Lever Molded	34	<a href="#">605-02</a>	Flow Ctrl Coil Spring- HF	51		Switch
14	<a href="#">516-10</a>	Lever Sensor	35	607	Flow Rate Adj Screw	a.	5030421	Autofil Switch
15	<a href="#">517-05</a>	Elec Lever Retainer LG	36	<a href="#">608</a>	O-Ring (017)	b.	<a href="#">5030419</a>	Manual Switch
16	524-02	Pivot Pin Long	37	609-02	Flow Rate Adj Nut	c.	<a href="#">5030418</a>	Portion Control
17	526	Shutoff Plug	38	610-04	Retainer Plate 6-32	52	5031015	Kit AC PCTRL Conv
18	<a href="#">527</a>	Shutoff Seal	39	<a href="#">643-00</a>	Flow Rate Adj Set 464GP	53	5031018	Kit AC Autofil Conv
19	<a href="#">528</a>	Quad Seal Valve Stem	40		AC Solenoid with Switch	54	020001284	Screw #8x5/8 PH Hi-Lo 18-8
20	<a href="#">530</a>	Pallet Bearing	a.	774-A36	Autofil	55	<a href="#">020001750</a>	464 GEN II Nozzle Asm
21	<a href="#">538-04</a>	Latch Pin	b.	<a href="#">774-E36</a>	Manual	<a href="#">1094-TRUCK-464GP</a> Flomatic 464 Parts Kit For Service Truck		





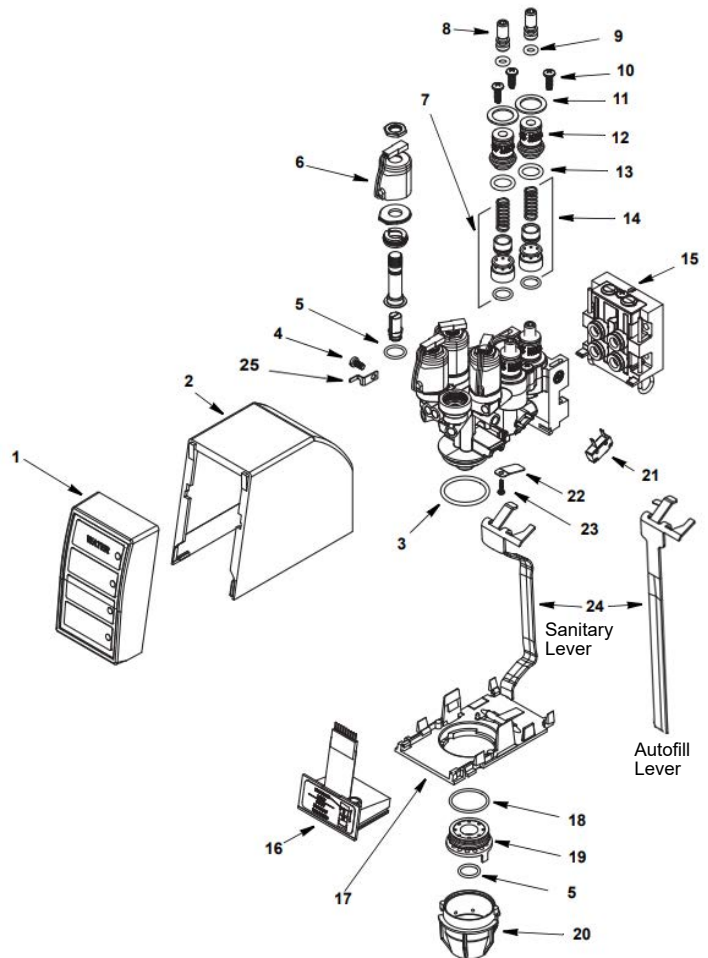
## FLOMATIC POST-MIX SODA VARIETY VALVE

Enables multiple flavors to be dispensed from each valve, maximizing selections while minimizing dispenser size and counter space.

Part Number	Description	Valve With Backblock & Cover	Application
<a href="#">030000070</a>	Variety Valve Sanitary Lever	Complete	Soda



Item Number	Part Number	Description
1	15-2895	Front Cover Sanitary Lever, Push Button, Autofill
-	15-2896	Front Cover Portion Control
2	01-1831	Rear Cover
3	030000067	O-ring 1.174 x .103
4	030000090	Screw, M4
5	<a href="#">10-0020</a>	O-ring .489 x .07
6	<a href="#">05-1711</a>	Solenoid
7	16-1588	Water Flow Control Kit
8	030000068	Flow Control Stem
9	10-0921	O-ring .206 x .103
10	10-1150	Screw, 8-16
11	030000088	Flatwasher
12	01-0295	Flow Control Housing
13	<a href="#">10-0010</a>	O-ring .487 x .103
14	<a href="#">16-1589</a>	Syrup Flow Control Kit
15	<a href="#">030000065</a>	Mounting Block
15a	10-0030	O-ring for Mounting Block
16	<a href="#">15-2924</a>	Electronic Module, Sanitary Lever
-	15-2892	Electronic Module, Push Button
-	15-2893	Electronic Module, Portion Control
-	<a href="#">15-2894</a>	Electronic Module, Autofill
17	01-1832	Bottom Plate
18	<a href="#">10-0007</a>	O-ring .989 x .07
19	<a href="#">01-1822</a>	Diffuser
20	<a href="#">01-1833</a>	Nozzle
21	<a href="#">030000073</a>	Switch, Sanitary Lever, Autofill
22	14-5164	Lever Spring, Sanitary Lever, Autofill
23	030000135	Screw, 3-24, Sanitary Lever, Autofill
24	14-5222	Lever, Sanitary Lever
-	14-5169	Lever, Autofill
25	14-5263	Nozzle Terminal, Autofill







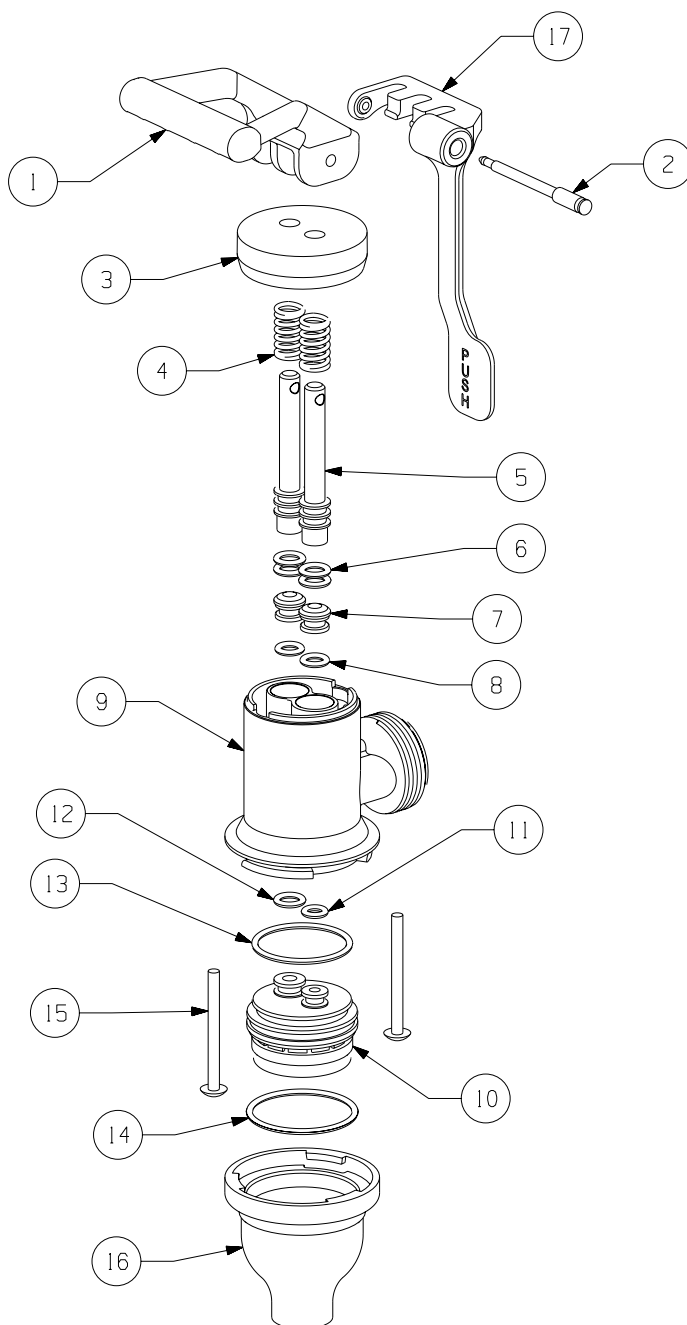
## TAPRITE NON-ELECTRIC POST-MIX VALVE

- Superior ratio control -meets all national brand standards
- Flow rate 1.5 to 3.0 oz. per second at 3:1 to 7:1 ratio
- Robust design with few moving parts
- Superior reliability, easy to install and service
- Easily sanitized
- Product mixing in nozzle limits contamination
- Nozzle and diffuser removable with no tools for cleaning
- Suitable for most any non-carbonated bag-in-box products; including tea, juice and coffee

Part Number	Description
<a href="#">675-0005</a>	Mechanical PMV Valve
<a href="#">637-0003</a>	Flow Control Assembly, Complete
<a href="#">637-0005</a>	Assembly, Valve, Post-Mix

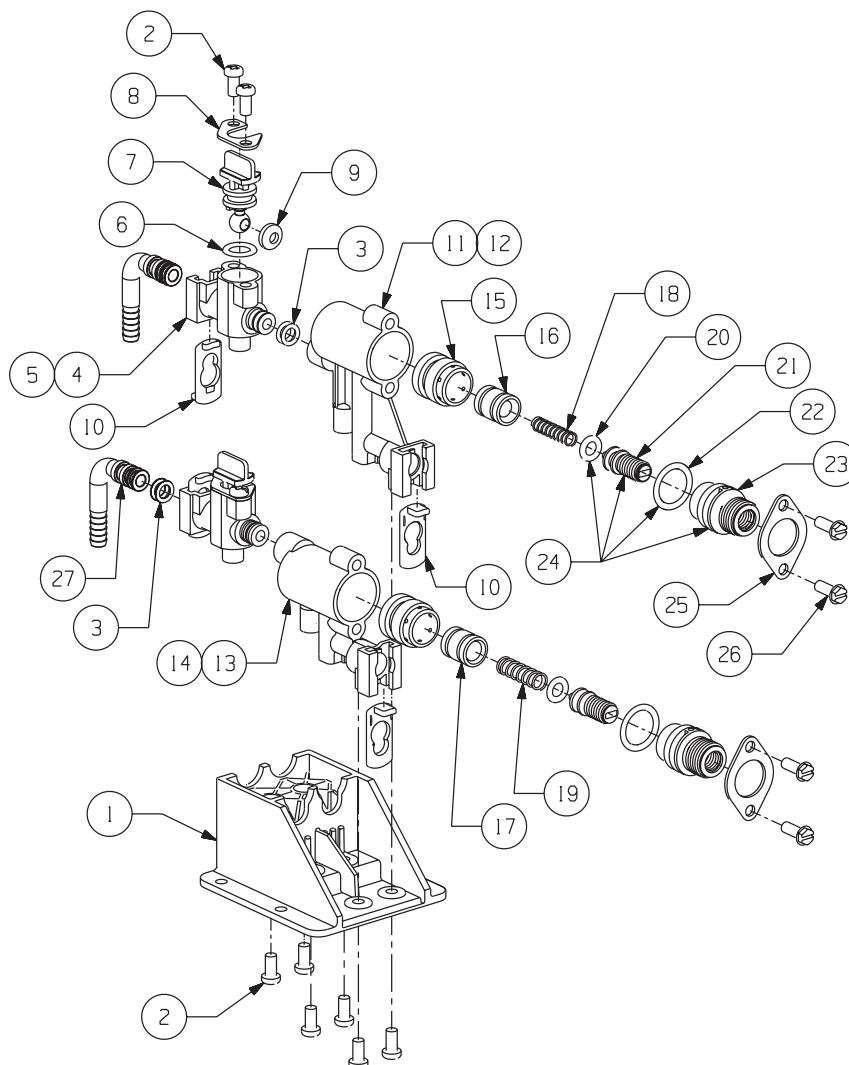
### 9.75" Nozzle With ADA Compliant Lever PMV Assembly

Item	Part Number	Description
1	265-0549	Handle, Post-Mix Valve
2	279-0152	Retainer, Pin, PMV, ADA
3	631-0079	Cap Assembly, PMV
4	215-0008	Spring, Post-Mix Valve
5	625-0031	Piston Assembly, Post-Mix Valve With 208-0010-429
6	<a href="#">208-0010-429</a>	O-Ring, 2-010, Lubricated
7	631-0080	Valve Seat Assembly, PMV With 208-0009
8	208-0009	O-Ring, 2-009
9	265-0279	Body, Valve, PMV
10	<a href="#">631-0069</a>	Nozzle Assembly, Post-Mix Valve With O-Rings
11	<a href="#">208-0008</a>	O-Ring, 2-008
12	<a href="#">208-0010</a>	O-Ring, 2-010
13	<a href="#">208-0023</a>	O-Ring, 2-023
14	208-0025	O-Ring, 2-025
15	220-0039	Screw, 6-32 x 1.500, PH, THD, SS
16	<a href="#">265-0305</a>	Body, Nozzle, Post-Mix, Black
17	265-0542	Lever, Tea Handle Conversion, ADA





## TAPRITE FLOW CONTROL ASSEMBLY



### Flow Control Assembly

Item	Part Number	Description
1	<a href="#">265-0362</a>	Bracket, Mounting, Valve, Tea
2	224-0002	Screw, 8-16 x.375, Plastite, PHSL, PHD
3	<a href="#">208-0010</a>	O-Ring, 2-010
4	625-0034	Backblock Sub-Assembly, Black With 208-0010
5	<a href="#">637-0003</a>	Assembly, Valve, Backblock, Black - Complete
6	<a href="#">208-0110</a>	O-Ring, 2-110
7	625-0009	Stem Assembly, Shut-Off With 208-0110
8	256-0011	Retainer, Stem
9	<a href="#">265-0043</a>	Washer, Stem
10	265-0063	Retainer, Clip, Fitting
11	<a href="#">639-0030</a>	Assembly, Flow Control, Syrup, Black, Tea
12	631-0033	Sub-Assembly, Body Flow Control, Syrup, 1, Black
13	639-0029	Assembly, Flow Control, Water, Nat With Black Bonnet
14	631-0017	Sub-Assembly, Body, Flow Control, 2, NAT
15	277-0001	Sleeve, Water/Syrup
16	277-0008	Piston, Syrup, .088
17	277-0010	Piston, Water, .140

Item	Part Number	Description
18	215-0002	Spring, Syrup
19	215-0003	Spring, Water
20	<a href="#">208-0108</a>	O-Ring, 2-108
21	625-0035	Plug Adjuster Sub-Assembly, Yellow, Tea With 208-0108
22	208-0114	O-Ring, 2-114
23	625-0007	Bonnet Sub-Assembly, Black With 208-0114
24	631-0078	Plug Adjust Assembly, Black Yellow Plug
25	256-0010	Retainer, Bonnet
26	224-0001	Screw, 8-16x.500, Plastite, SL, HHD
27	<a href="#">626-0013</a>	Assembly, 90°, .375 Dole x.375 Barb With 208-0010
	626-0012	Assembly, 90°, .375 Dole x.250 Barb With 208-0010

### Kits Available

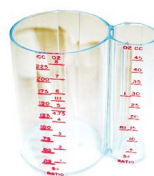
<a href="#">670-0012</a>	Package, Install, 2 ea 3/8 x 3/8 90° Fittings
670-0014	Package, Install, 2 ea 3/8 x 1/4 90° Fittings
<a href="#">675-0005</a>	Kit, Mechanical Orifice Control



## BRIX AND RATIO

### Ratio Cups

Part Number	Description
<a href="#">1092</a>	Ratio Cup 5:1 And 2:11 Through 11:1 Flomatic
<a href="#">99-9426</a>	Ratio Cup 5:1 And 5.5:1 Coke
<a href="#">99-9012</a>	Ratio Cup 5:1 And 5.5:1 McCann's
<a href="#">99-9440</a>	Ratio Cup Pepsi HY 5 Chamber
<a href="#">99-5509</a>	Ratio Cup 5:1 McCann's



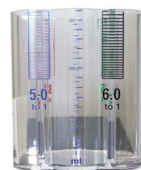
[1092](#)



[99-9426](#)



[99-9012](#)



[99-9440](#)



[99-5509](#)

### Syrup Separators

Part Number	Description
<a href="#">54-0031/04-SP</a>	Syrup Separator LEV And LPV/GMV Valve 3.0 Oz
<a href="#">54-0201/03-SP</a>	Syrup Separator LPV/GMV 4.5 Oz
<a href="#">82-3457</a>	Syrup Separator Kit Flavor Select Valve
<a href="#">49796</a>	Syrup Separator FF Valve
<a href="#">316-0010</a>	Syrup Separator Taprite Tower Post-Mix Valve
<a href="#">1089-00</a>	Syrup Separator S-Tube Flomatic
<a href="#">319540000</a>	Syrup Separator S-Tube UF1 / SF1



[54-0031/04-SP](#)



[54-0201/03-SP](#)



[82-3457](#)



[49796](#)



[316-0010](#)



[1089-00](#)



[319540000](#)

### Refractometer

Part Number	Description
<a href="#">RHB-32</a>	Refractometer, Brix 0-32%



[RHB-32](#)

### Thermometer

Part Number	Description
<a href="#">300NSF/B</a>	Thermometer LED Digital Pocket



[300NSF/B](#)

### Carbonation Tester

Part Number	Description
<a href="#">54-0007/02</a>	Carbonation Tester Assembly



[54-0007/02](#)

### Accu-Pour Pitcher

Part Number	Description
<a href="#">80741</a>	Accu-Pour Pitcher 128 Oz 4000 ML



[80741](#)

## LUBRICANTS

### Lubricants and Sealant

Part Number	Description
<a href="#">46</a>	Food Grade Lubricant 1 Oz Tube
<a href="#">HLFT</a>	Food Grade Lubricant 4 Oz Tube
<a href="#">104S</a>	Silicone Grease 1 Oz Tube



[46](#)



[HLFT](#)



[104S](#)

*Many other products, such as valve labels, are available on our website.  
If you don't see what you need, please visit [www.totalapex.com](http://www.totalapex.com)  
or call us at 877.901.APEX (2739).*

